

PLATFORM BODY



A FUTURE LINE COMPANY



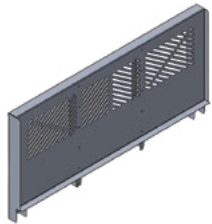
Our all-aluminum construction with exclusive corrosion-resistant extrusions outperforms the competition to deliver better performance

1 (888) 551-7028 / (319) 730-3800 / www.futureline.com
550 60th Ave. SW, Cedar Rapids, Iowa 52404 / Fax (319) 730-3805



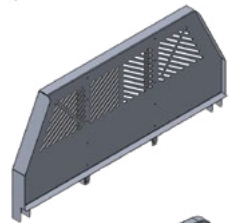
All extrusions are proprietary to Future Line Manufacturing, with T6061 aluminum alloy used as standard to deliver 100% corrosion resistance and increased strength, durability, and longevity

STAKE BODY BULKHEADS



Slotted bulkhead design increases visibility by up to 35%

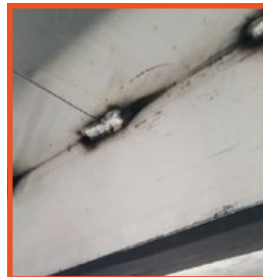
STRAIGHT BULKHEAD
(available in drop-in or weld-on)



TAPERED BULKHEAD
(available in drop-in or weld-on)



RANCHER BULKHEAD



UNDERBODY WITH EX2

FEATURES

◆ Exclusive to Future Line

- All aluminum; no steel or hybrid
- 8' 6" to 26' body length and 80" and 96" body widths
- ◆ 6" x 4" extruded rub rail
- ◆ Flooring: treated pine, apitong, Rumber®, or 1 3/4" extruded aluminum floor with smooth bottom
- ◆ Proprietary EX2 long sill rubber cushion insert
- Light holes and LED lighting that meets FMVSS-108 requirements
- 2" x 4" internal stake pockets on 24" centers
- ◆ Built with 4" extruded aluminum crossmembers on 12" centers, versus 16", 18", or 24" centers standard on our competition

BENEFITS

◆ Exclusive to Future Line

- ◆ Superior quality and durability from fully welded aluminum compared to our competitors' lower quality welded versions
- ◆ Lights are protected from impact and weather due to rubber mount
- ◆ Added frame protection plus reduced vibration and noise because of the proprietary EX2 long sill rubber cushion insert
- Quick mount design for fast and easy installation
- Reduced fuel costs from bodies that weight 50% less than steel

STANDARD-DUTY STAKE BODIES

Dimensions	Wood	1 3/4" Extruded Aluminum (with traction)	1 3/4" Extruded Aluminum (smooth)	Apitong
8'6" X 80"	AW0880612	AE0880612	AS0880612	AA0880612
9'4" X 96"	AW0996612	AE0996612	AS0996612	AA0996612
11'4" X 96"	AW1196612	AE1196612	AS1196612	AA1196612
12'4" X 96"	AW1296612	AE1296612	AS1296612	AA1296612
14'4" X 96"	AW1496612	AE1496612	AS1496612	AA1496612
16'4" X 96"	AW1696612	AE1696612	AS1696612	AA1696612
18'4" X 96"	AW1896812	AE1896812	AS1896812	AA1896812
20'4" X 96"	AW2096812	AE2096812	AS2096812	AA2096812
22'4" X 96"	AW2296812	AE2296812	AS2296812	AA2296812
24'4" X 96"	AW2496812	AE2496812	AS2496812	AA2496812
26'4" X 96"	AW2696812	AE2696812	AS2696812	AA2696812