



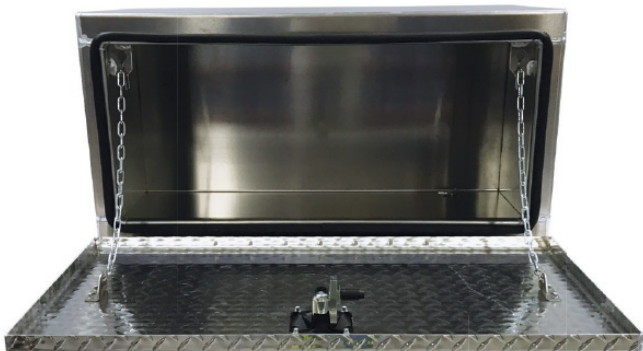
TUFF TRUCK BODIES TOOLBOXES

TOOLBOXES

HAVE A SPECIAL SIZE OR DESIGN? NO PROBLEM!

We can accommodate your needs with custom toolboxes built to order!

UNDERBODY TOOLBOXES



Our heavy-duty underbody truck and trailer toolboxes have offset hinges to allow for 180-degree unobstructed rotation. They are the most weather tight in the industry offering a concealed rain gutter and the thickest automotive bulb seal to ensure your tools stay dry. Available with optional inside pan.



UNDERBODY SIZES

WIDTH	HEIGHT	DEPTH
24"	18"	12"
30"	18"	12"
24"	18"	18"
30"	18"	18"
36"	18"	18"
48"	18"	18"
60"	18"	18"
24"	24"	24"
36"	24"	24"
48"	24"	24"
60"	24"	24"

TOP TOOLBOXES



Tuff Truck top toolboxes allow you to store more in your truck. Our offset hinge allows the box to be flush mounted and the 180-degree unobstructed door movement means easy access. Our standard automotive bulb seal is thicker than the competition to keep your tools dry.



TOP SIZES

WIDTH	HEIGHT	DEPTH
72"	16"	13"
88"	16"	13"
96"	16"	13"
72"	18"	16"
88"	18"	16"
96"	18"	16"
96"	18"	18"

SIDE SWING TOOLBOXES



Our single or double swing-out style box allows you to access your tools with ease. The superior finish and thickest automotive bulb seal available in the industry means they don't just look good - they perform! Widths of 24" and 30" have one door, while widths from 36"-60" have two doors.



SIDE SWING SIZES

WIDTH	HEIGHT	DEPTH
24"	18"	12"
30"	18"	12"
24"	18"	18"
30"	18"	18"
36"	18"	18"
48"	18"	18"
60"	18"	18"
24"	24"	24"
36"	24"	24"
48"	24"	24"
60"	24"	24"



BACKPACK TOOLBOXES

Add spacious and weather-resistant storage behind your truck cab with Tuff Truck Body's heavy-duty, aluminum tread plate backpack toolboxes. These toolbox heroes provide the much needed additional weatherproof storage between flatbeds, stake bodies, dump bodies, and utility bodies. With gas spring door holders and the thickest automotive bulb seal in the toolbox industry, you're sure to love your backpack tool box.

BACKPACK SIZES		
WIDTH	HEIGHT	DEPTH
85"	58"	24"
85"	46"	24"
92"	58"	24"

FEATURES

Tuff Truck Bodies toolboxes deliver the superior finish and strength you demand. Built from aluminum, our tool boxes are lightweight yet durable, resulting in reduced fuel costs and quality that lasts.



STANDARD FEATURES

- .125" aluminum doors and body construction (smooth & tread brite)
- Vector compression T-handle with lock and key
- Full stainless steel offset hinges
- Aluminum rivets and huck fasteners
- Four-sided, weather-shielded door frame with concealed rain gutter
- Automotive rubber 5/8" bulb seal (largest in industry)
- 3/16" detachable door chains

OPTIONAL FEATURES

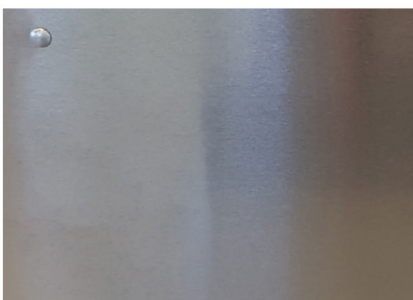
- 14-gauge #8 stainless steel doors
- Stainless steel T-handles
- Three-point latching
- Gas shocks
- Door cables



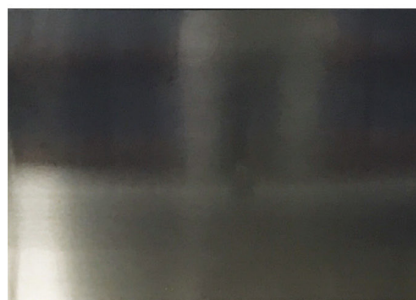
KEEP MOTHER NATURE OUT!

Tuff Truck Bodies makes the most weatherproof toolboxes in the industry, offering a fully-welded design that includes stainless steel hinges, vector compression latches and the thickest automotive bulb-type weather seal available.

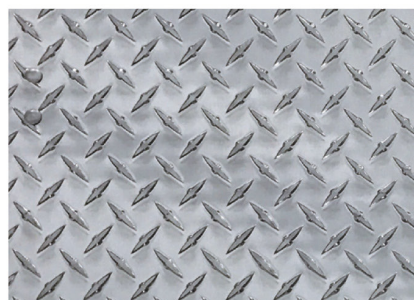
FINISHES



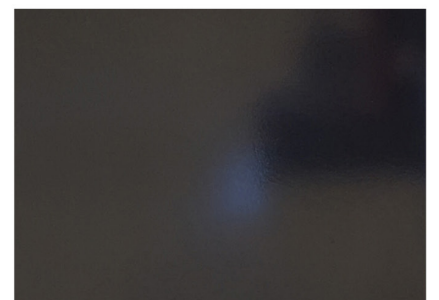
SMOOTH



STAINLESS STEEL



DIAMOND PLATE



POWDER-COATED

Call 888-212-6462 or visit www.TuffTruckBodies.com for more details!



BUILT TO CONQUER

1(888) 551-7028 | (319) 730-3800 | www.tufftruckbodies.com
550 60th Ave. SW, Cedar Rapids, Iowa 52404 | Fax (319) 730-3805