

RANCHER FDS



**OUR ALL-ALUMINUM CONSTRUCTION WITH EXCLUSIVE
CORROSION-RESISTANT EXTRUSIONS OUTPERFORMS THE
COMPETITION TO DELIVER BETTER PERFORMANCE**

1(888) 551-7028 | (319) 730-3800 | www.tufftruckbodies.com
550 60th Ave. SW, Cedar Rapids, Iowa 52404 | Fax (319) 730-3805



All extrusions are proprietary to Tuff Truck Bodies, with T6061 aluminum alloy used as standard to deliver 100% corrosion resistance and increased strength, durability, and longevity

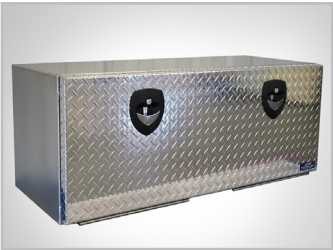


FEATURES

▪ Exclusive to Tuff Truck

- All aluminum; no steel or hybrid
- 6" x 4" extruded rub rail, 4" drop down sides with drop-in rear and recessed D-rings
- Boxed 1 3/4 extruded aluminum floor with smooth bottom
- Proprietary EX2 long sill rubber cushion insert
- 1/8" tread aluminum chamfered rear apron with LED stop, tail, turn and backup lights
- Gooseneck hitch with 25,000-lb. ball
- 1/8" tapered bulkhead with screen window, 2"x3" extruded tube frame and integrated stop, tail, turn and backup lights
- Recessed cast aluminum compartment cover for gooseneck hitch or turnover ball
- LED marker light per FMVSS-108 standards

OPTIONS



TOOLBOXES

Custom sizes to fit any need



HITCH OPTIONS

30,000-lb. gooseneck ball included, optional B&W turnover and fifth wheel companion hitches



REAR HITCH

Bolt-on rear hitch

BENEFITS

▪ Exclusive to Tuff Truck

- Superior quality and durability from fully welded aluminum compared to our competitors' lower quality welded versions
- Weight is further reduced by the crossmemberless design
- The underside doesn't collect road and job site debris because of the crossmemberless design
- Mounting height is reduced by 4", which means a lower center of gravity and installed bed height due to crossmemberless design
- Added frame protection plus reduced vibration and noise because of the proprietary EX2 long still rubber cushion insert
- Fast and easy installation with quick mount design
- Reduced fuel costs from bodies that weigh 50% less than steel

RANCHER FDS

Model #	Dimensions	CA
MAR07806	7'4" X 84"	42"
MAR08806	8'6" X 84"	56"
MAR08966	8'6" X 96"	56"
MAR09966	9'4" X 96"	60"
MAR11966	11'4" X 96"	84"

BUILT TO CONQUER